



Distributed by:

Thane Canada Inc.  
Mississauga ON L4W 5M6, Canada  
[www.thane.ca](http://www.thane.ca)

Thane USA, Inc.  
Canton OH 44735, U.S.A.  
[www.thane.com](http://www.thane.com)

© 2020 Thane IP Limited.  
Made in China

H2OMOPX5 MNL ENG US R2 200107

  
**H2OMOPX5™**



## Thank You

*Congratulations on your choice of the H2O Mop® Steamer; a more compact and lighter steam cleaner that easily converts from a floor mop and carpet cleaner into a powerful hand-held steamer.*

*The H2O Mop® Steamer offers a new way of cleaning that is effective and far more hygienic than conventional methods. The H2O Mop® Steamer increases cleaning power by converting water to steam and using a microfiber cloth to enhance absorbency. Dirt and grime can be eliminated in a matter of seconds. Cleaning with the H2O Mop® Steamer is environmentally friendly, as it uses active steam power without the use of detergents.*

*It is essential that you read this entire manual completely before using your H2O Mop® Steamer. Doing so helps ensure proper and safe usage which should also improve your overall cleaning results.*

*Thanks again for trusting the H2O Mop® brand.*

## Warranty/Parts/Service

### ONE YEAR LIMITED WARRANTY

Thank you for your purchase of the H2O Mop X5™ Elite. With this warranty, the H2O Mop X5™ Elite is warranted, to the original purchaser, for one (1) year from the date of purchase against defects in material and workmanship under normal use and service.

Should your H2O Mop X5™ Elite prove defective within one (1) year from date of purchase, do not return your unit to the point of purchase. Under this limited warranty, Thane USA, Inc at its sole option, will repair or replace any parts found to be defective due to a manufacturer's defect. A processing and handling fee (see below) will apply to any repair or replacement undertaken by Thane USA, Inc. This limited warranty is effective only if the product is purchased and used within the USA. This warranty extends only to personal use and does not extend to any product that has been used in a manner for which it is not intended. There are no warranties other than the limited warranty expressly set forth herein. This warranty is not transferable. After the expiration of the warranty, the cost of labor and parts will be the responsibility of the original purchaser.

Thane USA, Inc. is not responsible or liable for indirect, special or consequential damages arising out of or in connections with the use or performance of the product or other damages with respect to any economic loss, loss of property, loss of revenues or profits, loss of enjoyment or use, costs of removal, or installation, other consequential damages of whatsoever nature, failure to follow instructions or warnings in the owner's manual or use of the production in a manner for which it was not designed. Some provinces or states do not allow the exclusion or limitation of incidental or consequential damages. Accordingly, the above limitation may not apply to you.

This warranty gives you specific legal rights. You may also have other rights, which vary from state to state.

#### **THIS WARRANTY DOES NOT APPLY TO THE FOLLOWING:**

1. Damage due to accident, misuse, abuse, commercial use or vandalism.
2. Improper or inadequate maintenance.
3. Unauthorized modification or commercial use.
4. Damage in return transit
5. "Normal" wear of parts (wear and tear that occurs over time and with use), including chips, scratches, abrasions, discolorations or fading.
6. Repairs made by an unauthorized service technician.

#### **How to Obtain Warranty Services:**

The original purchaser should contact our customer care representative via e-mail at [customerareusa@thane.com](mailto:customerareusa@thane.com) Depending on the extent of the service required, the purchaser shall have the obligations and responsibility to:

- Pay \$14.95 processing and handling fee for parts replacement\*
- Provide proof of purchase, which includes date of purchase, point of purchase and product purchased.
- Return the item via Insured\* Parcel Post or courier. The return address, if applicable, will be provided by a customer care representative.

\*Processing fee subject to change depending on parts needed.

\* Thane USA, Inc. are NOT responsible for any uninsured items lost in transit or costs incurred by the purchaser to return the product.

## TROUBLESHOOTING GUIDE

Problem	Possible Cause	Solution
<b>The unit does not power on</b>	The unit is not plugged in or turned ON	Make sure the unit is plugged into a properly grounded outlet and the Power Switch is ON.
<b>Reduced steam or no steam</b>	Water Tank is empty	Fill Water Tank
	Blocked Steam Outlet	Remove Mop Head and clean the Steam Outlet.
	Lime scale deposit	Follow cleaning procedure to remove lime scale.
<b>Steam escapes from connections</b>	Attachment is improperly connected	Turn the Steamer Appliance OFF, allow it to cool down, detach the accessories and reattach them properly.
	Debris or obstructions at the connection points	Remove the accessory and check and clean connection points.
<b>The cleaning cloth becomes wet</b>	The cloth gets saturated with water	Replace with a new cleaning cloth (optional item) or allow cloth to cool, wring out and reattach. Lower steam setting.

## TABLE OF CONTENTS

Important Safeguards and Warnings .....	4
Introduction to your H2O Mop® Steamer .....	6
Key Product Features .....	7
Optional Accessories .....	8
How to Assemble the H2O Mop® Steamer Appliance .....	10
How to use the H2O Mop® Steamer Appliance .....	12
How to use the H2O Mop® Steamer Appliance – Floor Mop .....	13
The H2O Mop® Steamer Appliance – Hand-Held Steamer .....	14
Safety Pressure Release Valve - After Use .....	16
Accessory Usage .....	17
Cleaning and Maintenance .....	20
Troubleshooting Guide.....	22
Warranty/Parts/Service .....	23

## IMPORTANT SAFEGUARDS AND WARNINGS

**PLEASE READ ALL PRODUCT INSTRUCTIONS CAREFULLY. FAILURE TO FOLLOW THE WRITTEN INSTRUCTIONS CONTAINED IN THIS MANUAL WILL VOID YOUR WARRANTY, EXPOSE YOU TO UNDUE RISK AND/OR HARM AND MINIMIZE YOUR OVERALL CLEANING RESULT.**

**USE YOUR H2O MOP® STEAMER APPLIANCE ONLY AS DIRECTED IN THIS MANUAL AND ONLY WITH THE RECOMMENDED ACCESSORIES DESCRIBED HEREIN. USE OF ATTACHMENTS AND/OR ACCESSORIES NOT PROVIDED OR SOLD BY THE MANUFACTURER OR BY AUTHORIZED RESELLERS MAY CAUSE FIRE, ELECTRIC SHOCK AND/OR INJURY.**

**AS WITH ANY ELECTRICAL APPLIANCE, BASIC PRECAUTIONS SHOULD ALWAYS BE OBSERVED WHEN USING THIS STEAMER APPLIANCE, INCLUDING THE FOLLOWING:**



1. Verify that the main voltage indicated on the Rating Plate on this Steamer Appliance corresponds with the voltage of your electrical outlet.
2. In order to protect against risk of electric shock, only plug this Steamer Appliance into properly grounded outlets.
3. This Steamer Appliance is designed for indoor household use only. Do NOT use and/or store this Steamer Appliance outdoors. Commercial use voids the manufacturer's product warranty.
4. Do NOT leave this Steamer Appliance plugged in while unattended and/or not in use.
5. Close attention is necessary when this Steamer Appliance is used near children, pets and/or plants. Never direct steam towards people, animals or plants as steam is by nature hot and such steam emissions may cause scalding.
6. Do NOT allow this Steamer Appliance to be used as a toy and the Steamer Appliance should NOT be operated and/or used by children or others that have not read this product manual. Children should be supervised to ensure that they do NOT play with this Steamer Appliance.
7. This Steamer Appliance should NOT be used by persons with physical, sensory or mental impairments.
8. Do NOT handle and/or operate this Steamer Appliance and/or the plug with wet hands and/or without shoes.
9. Do NOT immerse this Steamer Appliance in water and/or other liquid.
10. Do NOT direct or point the Steamer Appliance's steam towards electric equipment, appliances, or devices such as electric ovens, stove burners, household appliances and the like.
11. Do NOT use this Steamer Appliance with a damaged Power Supply Cord or Plug, and/or if it is not working as it should, or if it has been dropped, damaged, left

**Step 5** – Ensure that the Main Body's lower portion and especially the steam outlet is aimed away from the floor and/or surrounding objects. The intent is to have the emitting steam not contact anything. Then press the Power Switch to the ON position.

**Step 6** – Allow this Steamer Appliance to produce steam until the vinegar/water solution is used up. To speed the process you can adjust the steam flow by moving the Steam Regulator Dial to the high setting.

**Step 7** – Repeat the above procedure as many times as necessary until a normal steam flow is achieved.

**Step 8** – Once a normal steam flow has been achieved, fill the Water Tank per the instructions contained in this manual. Move the Main Body so the clean water rinses the Water Tank. Then pour the water out.

**Step 9** – Refill the Water Tank with water and release the steam following the instructions contained in this manual until all the water has been dispersed and the Water Tank is empty.

**Step 10** – Refill the Water Tank per the instructions contained in this manual. Perform a test cleaning on a suitable isolated surface area to ensure that no lime scale debris and/or vinegar/water solution is left in the Main Body.

***Use detergent to clean the accessories when they are dirty.  
Wash with clean water and air dry.***

**To clean calcium deposits building up inside the Water Tank:**

Add 1-2 tablespoons of white vinegar to a full Water Tank, close the Water Tank cap and shake the contents. DO NOT TURN THE STEAMER ON. Let the unit sit for a few hours. Empty the Water Tank and rinse with clean water until it rinses clear.

**Cleaning blocked steamer accessories:**

Due to the high mineral content of water in some areas, some calcium buildup might develop inside the tip of the Jet Nozzle. To clean it, we recommend using a spray lubricant. Spray a small burst or two of the lubricant inside the tip of the Jet Nozzle. After spraying the lubricant, fill the Steamer Appliance with water and run a continuous jet of steam through the affected accessory for several minutes to remove the deposit. WE RECOMMEND PERFORMING THIS PROCEDURE IN A PROTECTED AND WELL-VENTILATED AREA.

**Microfiber Cloth care:**

Machine wash at 60 °C (140 °F) / Do not bleach / Do not use fabric softener.

## CLEANING AND MAINTENANCE

### IMPORTANT WARNING

**UNPLUG THIS STEAMER APPLIANCE FROM THE POWER OUTLET WHEN PERFORMING MAINTENANCE AND/OR CLEANING THIS STEAMER APPLIANCE.**

**AFTER UNPLUGGING THIS STEAMER APPLIANCE LET THIS STEAMER APPLIANCE COOL FOR A MINIMUM OF 30 MINUTES BEFORE ATTEMPTING ANY CLEANING AND/OR MAINTENANCE.**

**NEVER IMMERSE THIS STEAMER APPLIANCE IN WATER AT ANYTIME!**

### **Maintenance/Cleaning Procedure To Remove Lime Scale**

If your Steamer Appliance begins to produce steam slower than usual, or emits steam sporadically, or stops producing steam you may need to remove lime scale that has built up inside. It is necessary to remove lime scale on a regular basis every 25 times you use a full tank of water or at least once a month. This is especially true in areas with hard water.

### **Removing Lime Scale - Please follow the following procedures:**

#### **Using the Cleaning Pin**

**Step 1** - Once your Steamer Appliance has cooled completely, remove the Mop Head and/or other accessory at the lower end of the Main Body as described in the section THE H2O MOP® STEAMER APPLIANCE – HAND-HELD STEAMER.

**Step 2** - Locate the small hole of the steam outlet where the Mop Head attaches to the Main Body's lower end.

**Step 3** - Insert the Cleaning Pin's straight end in the small hole of the steam outlet and move the Cleaning Pin up and down while also spinning the pin between your fingers. Repeat this process several times to ensure that all scale and/or debris has been removed from the steam outlet.

**Step 4** - Reassemble this Steamer Appliance as provided for in this manual.

#### **Using a Cleaning Solution**

**Step 1** - Prepare a liquid solution of 50ml/1.5 oz white vinegar and 100ml/3 oz water.

**Step 2** - Empty all water from the Water Tank. Then add the above described liquid solution to the Water Tank.

**Step 3** - Remove the Mop Head and/or steamer Accessory from the Main Body pursuant to the directions described in this manual.

**Step 4** - With the Power Switch in the OFF position, plug the Power Supply Cord into a properly grounded electric outlet. Wait the necessary time for the LED ON/OFF Light to turn from RED to GREEN.

outdoors, or immersed in water. If any of the above occur, this Steamer Appliance must be replaced or repaired by the manufacturer and/or a qualified repair facility to avoid hazard, severe injury and/or damage to property.

- 12.** Do NOT unplug this Steamer Appliance by pulling on the Power Supply Cord and NEVER force the Plug into an outlet/socket.
- 13.** Do NOT pull or carry this Steamer Appliance by the Power Supply Cord. Do NOT use the Power Supply Cord as a handle, close a door on the Power Supply Cord, or pull the Power Supply Cord around sharp edges or corners.
- 14.** Keep this Steamer Appliance and all parts thereof including the Power Supply Cord away from heated objects and surfaces.
- 15.** Do NOT use extension cords or outlets with inadequate current-carrying capacity, and in order to avoid circuit overload, do NOT operate another electrical appliance on the same outlet/socket (circuit) as this Steamer Appliance.
- 16.** To disconnect this Steamer Appliance, turn the Power Switch (O/I) to the "OFF" position, then remove the Plug from the outlet/socket by grasping the back or sides of the Plug and gently pulling it away from the outlet/socket. Do NOT pull the Power Supply Cord to remove the Plug from the outlet/socket.
- 17.** Unplug the unit after each use and/or before refilling the Water Tank and/or servicing.
- 18.** Do NOT insert any objects into openings in the Steamer Appliance and/or use it with any of its openings blocked.
- 19.** Store this Steamer Appliance indoors in a cool, dry place.
- 20.** Keep your work area well lit and clear using extra caution when using this Steamer Appliance on or near stairs, furniture, doorways, uneven surfaces, and the like.
- 21.** Stop using this Steamer Appliance if you observe water leaking and contact a qualified repair technician.
- 22.** Never put hot water or any other liquids (including alcohol-based), additives, detergents, cleaners and the like (regardless of temperature) in this Steamer Appliance's Water Tank. Doing so will make operation unsafe and damage this Steamer Appliance.
- 23.** Do NOT use the Mop Head without first attaching the Floor Cloth.
- 24.** Always keep the steam opening clear of any obstructions. Avoid placing the steam opening on soft surfaces to avoid blocking the steam flow. Keep the steam opening free of lint, hair and other potential obstructions to ensure proper steam flow.
- 25.** Do NOT use this Steamer Appliance in spaces that are exposed to flammable, explosive or toxic vapors such as paint thinner or oil-based paint.
- 26.** Do NOT use this Steamer Appliance on leather, wax-polished furniture or floors, unsealed hardwood or parquet floors, unglazed ceramic floors, synthetic fabrics, velvet or other delicate steam-sensitive materials.
- 27.** Do NOT use this Steamer Appliance for space heating purposes or place it on or near hot surfaces such as a hot gas or electric burner, or in a heated oven.
- 28.** Do NOT use this Steamer Appliance for other than its intended use.

**SAVE THESE INSTRUCTIONS**

## INTRODUCTION TO YOUR H2O MOP® STEAMER

Not all floor types are suitable for steam cleaning. ALWAYS check the use and care instructions of your flooring manufacturer or distributor before using this Steamer Appliance. When in doubt – consult a flooring specialist.


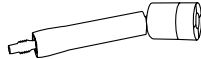
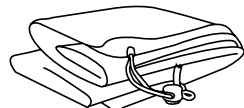
This H2O Mop® Steamer Appliance is designed to thoroughly clean sealed floor surfaces, such as marble, ceramic, carpet, stone, linoleum, hardwood, laminate and tile. To determine if your floor type is suitable test this Steamer Appliance on a small isolated area of your particular flooring(s) prior to overall use on all your flooring(s) surfaces. The heat and steam action may remove the wax on surfaces treated with wax. Do not let the Steamer Appliance stand on any wood or heat-sensitive floor for an extended period of time. Water marks, discoloration or damage to the floor surface can occur if this Steamer Appliance is left operating too long in one place. When using on vinyl, linoleum or any other heat-sensitive floors, use extra caution. Too much heat can melt glue in the flooring. Use only on laminated flooring that has been professionally installed and without any gaps or cracks that could permit the entry of moisture.

### FOR BEST RESULTS

- Sweep or vacuum floor prior to using this Steamer Appliance.
- To avoid accumulation of excess water, the Microfiber Cloth must be clean and dry before use.

### IMPORTANT

- Never steam at one spot for too long.
- Do NOT put hands or feet under the Mop Head or in the emitting steam.
- It's normal to hear a “pulsing” noise during use, indicating that the Steamer Appliance is producing steam.
- There may be some minor “spitting” of water mixed with the steam.

Part and Usage	Assembly	Tips/Caution
<p><b>LONG STEAM LAZER®</b> Easier to clean hard to reach areas (behind cabinets, behind the toilet, far corners, etc.).</p>	<p>Attach the Long Steam Lazer® to the Extension Hose by aligning the lock button on the Extension Hose with the designated hole on the Long Steam Lazer® tool and push until it locks in place. Attached to the Extension Hose, the Long Steam Lazer® can be used by itself or with the Bendable Jet Nozzle and/or Round Brush (Nylon). Remove the end cap before installing the Bendable Jet Nozzle or Round Brush (Nylon).</p> 	
<p><b>BENDABLE JET NOZZLE</b> Cleans tight corners and hidden places.</p>	<p>Screw the Bendable Jet Nozzle onto the Long Steam Lazer®. Remove the black plastic cap from the top of the Long Steam Lazer®. Replace the plastic cap after attaching the Bendable Jet Nozzle.</p> 	
<p><b>HANDS-FREE SHOULDER CRADLE STRAP</b> Helps to carry the Hand-Held Steamer. With one hand operate the Extension Hose with attached accessory and the other hand is free which allows easier movement as you clean.</p>	<ol style="list-style-type: none"> <li>1. Undo the hook-and-loop fastener.</li> <li>2. With the Shoulder Strap on the top side of the Main Body put the Main Body through the larger strap loop.</li> <li>3. Do up the hook-and-loop fastener to secure the Main Body in the Shoulder Strap.</li> <li>4. Once the Main Body is securely placed in the Shoulder Strap, adjust the length of the Shoulder Strap and place it on your shoulder.</li> </ol>	<p>Ensure that the Shoulder Strap is not covering the release button at the bottom side of Main Body, which releases the Extension Hose or Jet Nozzle.</p> <p>Ensure that the Shoulder Strap is not covering the On/Off button.</p>
<p><b>ACCESSORY BAG</b> Keeps all accessories and small parts in one place. Easy to view the contents and easily locate needed tool or accessory and reach for it.</p>		<p>Handle with care as tools and accessories with sharp ends might poke through the bag (Scraper, Nozzle, etc.).</p>



#### 1 LOW STEAM

##### FOR SENSITIVE SURFACES

- Garments
- Mattresses & Pillows
- Upholstery
- Sealed Hardwood/Laminate (may also use medium steam setting)



#### 3 HIGH STEAM

##### FOR TOUGHER STAINS

- Stainless Steel
- Porcelain Fixtures
- Carpets & Door Mats



#### 2 MEDIUM STEAM

##### FOR LIGHT CLEANING

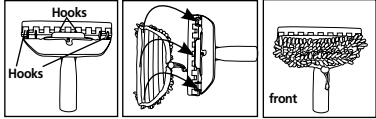
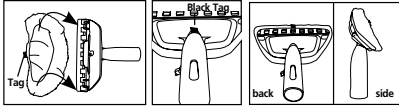
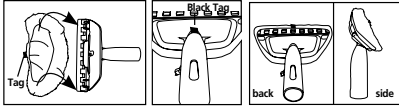
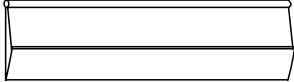
- Plastic
- Granite & Marble
- Tiles
- Slate
- Windows & Mirrors



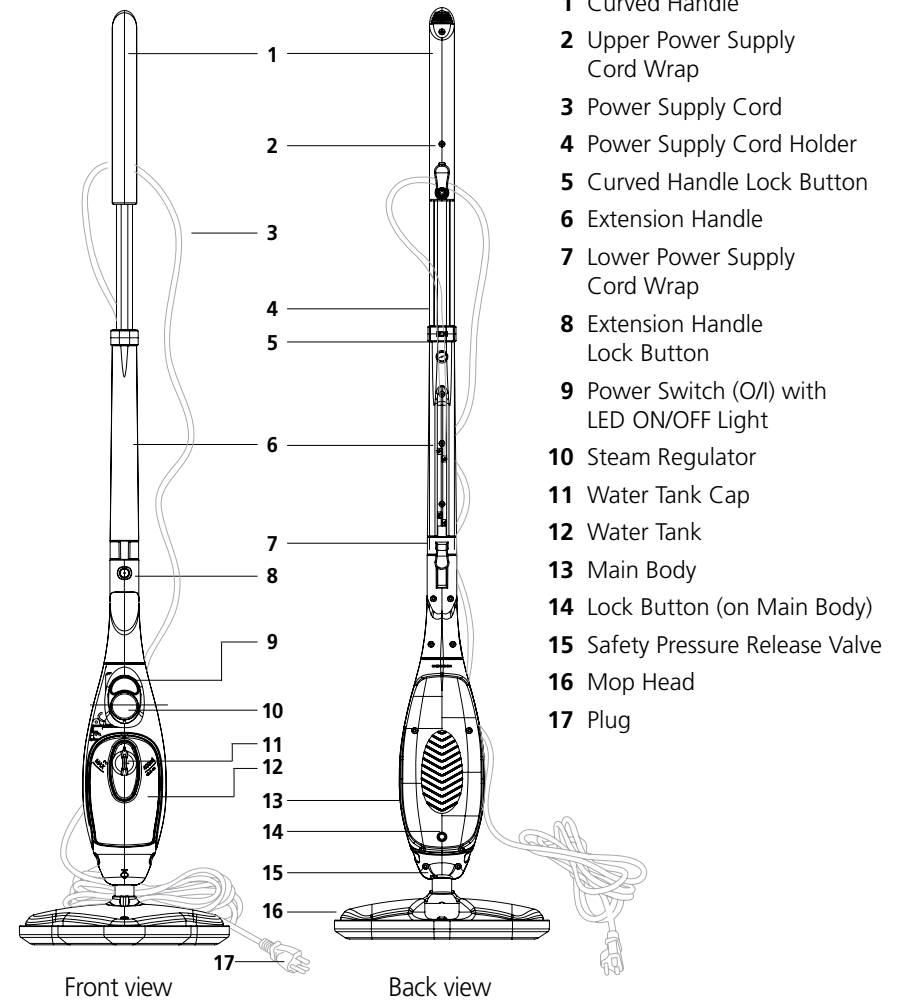
#### 4 HOT SPRAY

##### FOR SCRUBBING

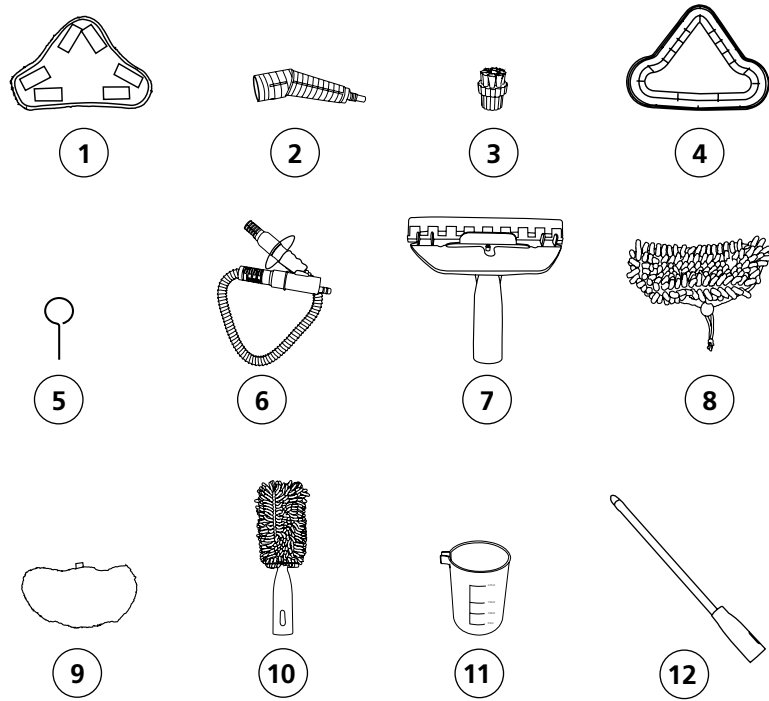
- Concrete
- Toilets
- Sinks
- Rims

Part and Usage	Assembly	Tips/Caution
<b>WINDOW CLEANING CORAL CLOTH</b> Use it to clean windows, mirrors and glass.	Install the Coral Cloth over the Window Cleaning Tool. Do not cover the squeegee blade or scraper when installing the cleaning cloth. 	Do not use steam on frozen windows. Be careful when using the steamer on glass, as the glass may break.
<b>GARMENT STEAMING CLOTH</b> To steam a garment, place item of clothing on a hanger and steam the garment directly. Slowly slide the Garment Steamer Cloth vertically over the garment to smooth the fabric and remove wrinkles and odors.	Install the Garment Steaming Cloth / Lint Cloth/ Microfiber Scrubbing Cloth over the Window Cleaning Tool. Make sure to attach the cloth to all hooks on the Window Cleaning Tool Frame to avoid slipping from the frame during use. 	For garment steaming, do not use steam settings 3 and 4. Some fabrics like leather, suede, and velvet may not be suitable for steaming. Please refer to the manufacturer's label. Curtains and draperies can be steamed while hanging.
<b>LINT CLOTH</b> Slowly pass over surface to be cleaned. The absorbent Lint Cloth picks up the dirt/hair loosened by the steam.		Do not use steam settings 3 and 4. Do not use on animals.
<b>MICROFIBER SCRUBBING CLOTH</b> Removes more dust and dirt with less effort. Effective in cleaning stubborn smudges or spills.		
<b>SCRAPER – RIGID BLADE</b> 1. Apply steam over the area that you plan to scrape. Repeat a few times if needed. 2. Detach the Window Cleaning Tool with Scraper from the Extension Hose and start stripping off the wallpaper or any hardened spills (ketchup, syrup, etc.) from ceramic or vinyl tiles, glass windows etc. For removing wallpaper: Make "X" shaped slits into the surface of the wallpaper with utility knife to allow steam to soften the adhesive.	Remove the Squeegee Blade and slide the Scraper into the Window Cleaning Tool with the grooved side of the Scraper facing shorter plastic teeth of the Window Cleaning Tool. Install the Coral Cloth or Garment Cloth to the Window Cleaning Tool with the Scraper and attach it to the Extension Hose. 	If using for wallpaper removal: Cover your floor to protect from any water dripping. Cover the outlets with electrical tape to protect from any liquids. Selection of the steam setting will depend on the surface being treated. If you are concerned about possible drywall damage from the steam, start with lower steam setting.

## KEY PRODUCT FEATURES

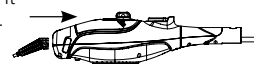
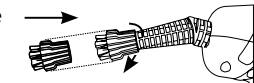
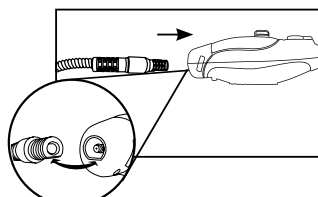

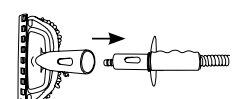


## OPTIONAL ACCESSORIES



- 1 Microfiber Mop Cloth (H2O Mop® X5™ & H2O Mop® X3™ Models)
- 2 Jet Nozzle (H2O Mop® X5™ & H2O Mop® X3™ Models)
- 3 Round Brush Head – Black Nylon (H2O Mop® X5™ & H2O Mop® X3™ Models)
- 4 Carpet Glider (H2O Mop® X5™ & H2O Mop® X3™ Models)
- 5 Cleaning Pin (H2O Mop® X5™ & H2O Mop® X3™ Models)
- 6 Extension Hose (H2O Mop® X5™ Model)
- 7 Window Cleaning Tool with Squeegee (H2O Mop® X5™ Model)
- 8 Window Cleaning Cloth (H2O Mop® X5™ Model)
- 9 Garment Steaming Cloth (H2O Mop® X5™ Model)
- 10 Duster with Cloth (H2O Mop® X5™ Model)
- 11 Measuring Cup (H2O Mop® X5™ Model)
- 12 Long Steam Lazer® Wand (Optional Extension Hose Attachment)

## ACCESSORY USAGE

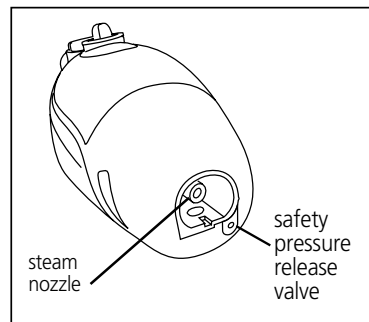
Part and Usage	Assembly	Tips/Caution
<b>JET NOZZLE</b> Produces powerful steam for cleaning corners and gaps.	Insert the Jet Nozzle into the designated hole in the Main Body until it safely locks in place. 	Make sure the Jet Nozzle is securely locked in place before usage.
<b>ROUND BRUSH (NYLON)</b> The round nylon brush is great for cleaning smooth hard surfaces, such as toilets, sinks, and kitchen counters, etc. It can be used with soap or detergent to clean dirty areas.	Round Brush can be attached to any of the Jet Nozzles.  Attach the Round Brush by screwing onto the threaded end of the Jet Nozzle, Bendable Jet Nozzle or Long Steam Lazer®.	Use different color brush for particular cleaning areas (kitchen, bathroom, etc.).
<b>EXTENSION HOSE</b> This Extension Hose is designed for use with Hand-Held Steamer and with the following attachments: <ul style="list-style-type: none"> <li>- Window Cleaning Tool</li> <li>- Duster</li> <li>- Bendable Jet Nozzle</li> <li>- Long Steam Lazer®</li> </ul>	Insert the designated end of the Extension Hose into the designated hole in the Main Unit until it locks in place. 	Make sure the Extension Hose is securely locked into place before usage. When in use, keep the Extension Hose away from your body and avoid touching the hose as it can get hot. Do not pull the Extension Hose with excessive force, as it might cause damage and result in a steam leak.
<b>DUSTER, WITH CORAL CLOTH</b> Slowly pass over surface to be cleaned. The absorbent Coral Cloth picks up the dirt loosened by the steam.	Install the Coral Cloth into the Duster frame and attach the Duster to the Extension Hose. 	Do not use steam setting 4 when using the Duster.
<b>WINDOW CLEANING TOOL</b> Attached to the Extension Hose and in combination with one of the provided cleaning cloths or scraper, use this tool for window cleaning, garment steaming, wallpaper removal, etc.	Align the lock button on the Extension Hose with the designated hole on the Window Cleaning Tool Frame and push in the Extension Hose until it locks in place. Install cleaning cloth of your choice onto the Window Cleaning Tool. 	

(Continued on next page)



## SAFETY PRESSURE RELEASE VALVE – AFTER USE

This Steamer Appliance is equipped with a Safety Pressure Release Valve that is designed to relieve pressure inside the water heater. It does so by discharging hot steam or water through the Safety Pressure Release Valve if the steam nozzle is blocked. Blockage can sometimes occur due to lime scale buildup on the Main Body or other reasons. Refer to the illustration shown here to better understand this feature.

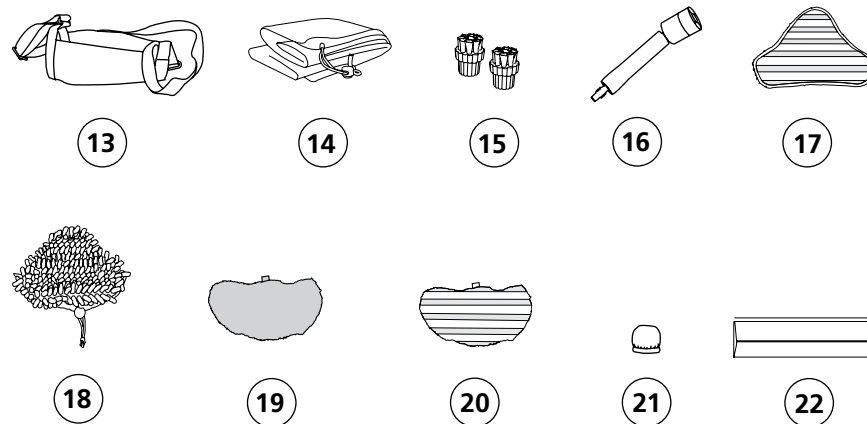


### **⚠ IMPORTANT WARNING**

**Steam or water discharged from the Safety Pressure Release Valve is very hot. At all times during use, always make sure to keep your body parts clear of the Safety Pressure Release Valve to avoid burns or injury by hot steam or water.**

### **Tips for After Using Your Steamer Appliance –**

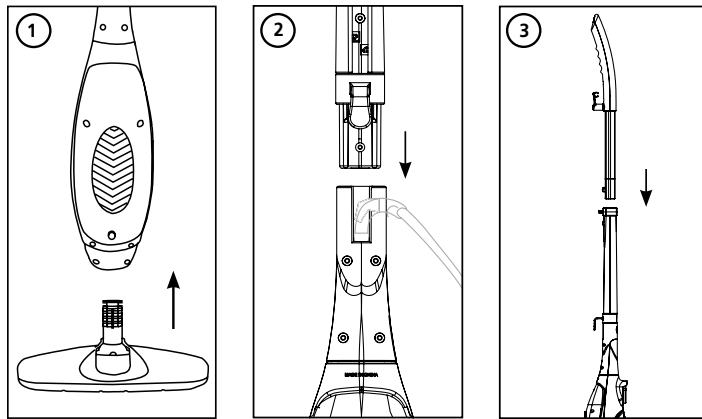
- Double check to make sure the Power Switch is in the OFF (O) position.
- Unplug the Power Supply Cord from the electric outlet per this manual's instructions.
- Always empty the Water Tank after each use to avoid leakage and other potential problems.
- Drain left-over water or steam before storing.
- Wrap/secure the Power Supply Cord around Upper and Lower Power Supply Cord Wraps.
- Wipe all surfaces of this Steamer Appliance with a soft cloth.
- Store in a protected cool, dry area.



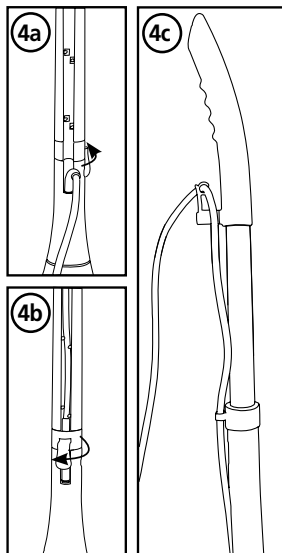
- 13** Hands-Free Shoulder Cradle Strap (Optional All Models)
- 14** Accessory Storage Bag (Optional All Models)
- 15** Round Brush Heads – Colored Nylon (Optional All Models)
- 16** Bendable Jet Nozzle (Optional All Models)
- 17** Microfiber Scrubbing Mop Head Cloth (Optional All Models)
- 18** Microfiber Coral Mop Head Cloth (Optional All Models)
- 19** Garment Steaming Lint Cloth (Window Cleaning Tool Accessory)
- 20** Microfiber Scrubbing Window Cloth (Window Cleaning Tool Accessory)
- 21** Round Brush Head Cloth (Round Brush Head Accessory)
- 22** Scrapper Blade (Window Cleaning Tool Accessory)

## HOW TO ASSEMBLE THE H2O MOP® STEAMER APPLIANCE

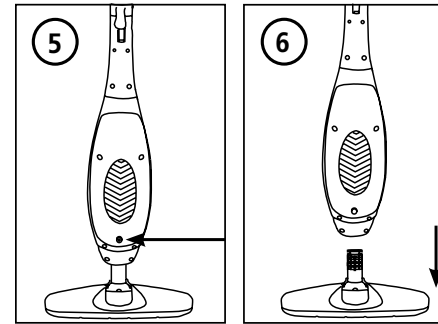
Remove all parts and pieces from the box and lay them out on the floor for ready access. Refer to the KEY PRODUCT FEATURES page to find the parts that match the written descriptions below. Make sure the Steamer Appliance is unplugged at all times during any assembly process.



**Steps 1, 2 and 3** – Start the assembly of your Steamer Appliance as shown in the illustrations marked 1, 2 and 3 above.



**Step 4** – Turn the Lower Power Supply Cord Wrap to align the cord channel opening with the cord channel in the Extension Handle. Insert the Power Supply Cord all the way in its cord channel, with the cord in the channel turn the Lower Power Supply Cord Wrap to “lock” the Power Supply Cord in place (see illustrations 4a and 4b). Insert the Power Supply Cord in the Power Supply Cord Holder at the top of the Extension Handle. Insert the Power Supply Cord into the Upper Power Supply Cord Wrap as shown in illustration 4c.



**Steps 5 & 6** – Release the Mop Head from the Main Body by pressing the Lock Button on the Main Body’s lower portion and simultaneously pulling the Mop Head straight down away from the Main Body.

The Steamer Appliance is now ready to accept the Jet Nozzle or Extension Hose attachments as instructed in the ACCESSORY USAGE section of this manual.

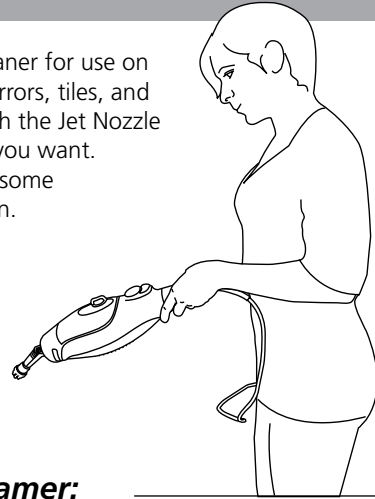
### **IMPORTANT**

#### **Hand-Held Steamer Cleaning Tips –**

- Do **NOT** use this hand-held Steamer Appliance to clean cold or frozen windows, glass, mirrors or similar surfaces that are subject to breaking or cracking.
- In general, be extremely careful when using this Hand-Held Steamer Appliance on glass avoiding too much pressure, scrubbing or force, as by nature glass may break.

## THE H2O MOP® STEAMER APPLIANCE – HAND-HELD STEAMER

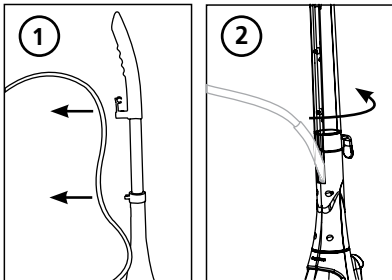
The Hand-Held Steamer is an ideal portable cleaner for use on work surfaces, countertops, sinks, windows, mirrors, tiles, and spot cleaning on floors, carpets and rugs. Attach the Jet Nozzle to deliver focused cleaning power to the areas you want. Screw the Round Brush onto the Jet Nozzle for some scrubbing power for the baked on and caked on.



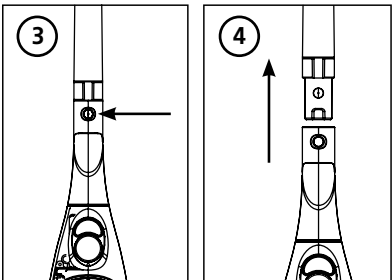
### CAUTION

**Make Sure The Steamer Appliance Is Unplugged Before Assembly.**

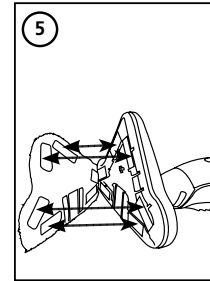
### To Configure the Hand-Held Steamer:



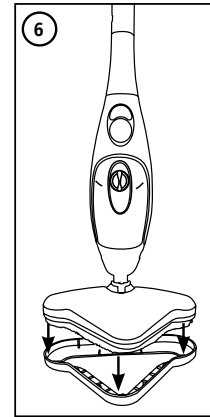
**Steps 1 & 2** – Locate the Lower Power Supply Cord Wrap and turn it to “unlock” the Power Supply Cord. Release the upper end of Power Supply Cord from Upper Power Supply Cord Wrap and Cord Holder as shown in illustration 1. Remove the Power Supply Cord from the cord channel as shown in illustration 2.



**Steps 3 & 4** – Release the Extension Handle by pressing the Extension Handle Lock Button as shown in illustration 3 and simultaneously sliding out the handle as shown in illustration 4.



**Step 5** – Locate one Microfiber Mop Cloth and match it up to the underside of the Mop Head as shown in illustration 5. Take care to ensure the fastening strips sewn into the Microfiber Mop Cloth align with the “gripping” strips on the Mop Head’s underside. Press and fit together ensuring a snug fit.



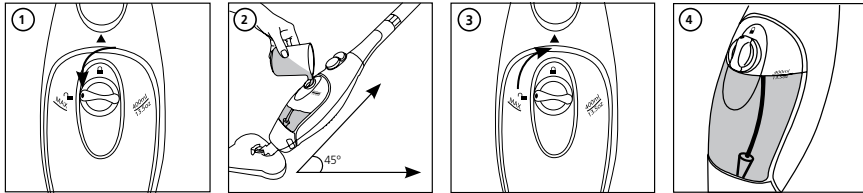
**Step 6 (Carpet Glider)** – When using this Steamer Appliance on carpets or rugs, place the Mop Head with a Microfiber Cloth in place into the Glider accessory as shown in illustration 6. Do NOT attempt to use this Steamer Appliance on carpets or rugs without the Glider securely in place. NEVER use the Glider on surfaces that are prone or susceptible to scratching.

### CAUTION

**Make sure that the Steamer Appliance is unplugged from an electrical outlet and the Power Switch (O/I) is in the “OFF” (O) position before assembling the Steamer Appliance and/or changing the Microfiber Cloth and/or other accessories.**

## HOW TO USE THE H2O MOP® STEAMER APPLIANCE

### FILLING THE TANK



Ensure that the Steamer Appliance is unplugged. Turn the Water Tank Cap **counter-clockwise** to the "OPEN" (unlock image) position and remove the Water Tank Cap as shown in illustration 1. Angle the Steamer Appliance as shown in illustration 2 and add water with the Measuring Cup or similar cup. Do NOT overfill or add water directly from a faucet, hose or the like. The Water Tank capacity is 400ml/13.5 oz. Replace the Water Tank Cap into the hole on the Water Tank and turn **clockwise** until the blue dot on the Water Tank Cap aligns with the "CLOSE" (locked image) position as shown in illustration 3. Make sure the Copper Cone inside the Water Tank is always submerged in the water (see illustration 4) while operating the Steamer Appliance.

### ⚠ IMPORTANT

- Never put hot water or any other liquids (including alcohol-based), additives, detergents, cleaners and the like (regardless of temperature) in this Steamer Appliance's Water Tank. Doing so will make operation unsafe and damage this Steamer Appliance.
- Unless approved by the manufacturer, do NOT put any scented products in the Water Tank.
- The Steamer Appliance uses tap water, but in areas with hard water use distilled water for better performance.

### Select one of the Steam Regulator positions

**1 LOW STEAM**  
FOR SENSITIVE SURFACES

- Garments
- Mattresses & Pillows
- Upholstery
- Sealed Hardwood/Laminate (may also use medium steam setting)

**2 MEDIUM STEAM**  
FOR LIGHT CLEANING

- Plastic
- Granite & Marble
- Tiles
- Slate
- Windows & Mirrors

**3 HIGH STEAM**  
FOR TOUGHER STAINS

- Stainless Steel
- Porcelain Fixtures
- Carpets & Door Mats

**4 HOT SPRAY**  
FOR SCRUBBING

- Concrete
- Toilets
- Sinks
- Rims

## HOW TO USE THE H2O MOP® STEAMER APPLIANCE – FLOOR MOP

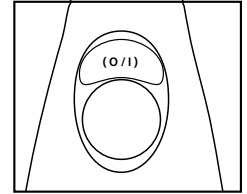
Once completely assembled and filled with water, plug the Power Supply Cord into a grounded electrical outlet. The LED ON/OFF Light should show RED indicating that electrical power is available and the Steamer Appliance is then ready to be turned ON and OFF.

### Turning the Steamer Appliance ON:

**Step 1** - Once plugged in, the LED ON/OFF Light should remain RED for approximately 20-30 seconds. Do NOT push the Power Switch while the LED ON/OFF Light is RED.

**Step 2** - Wait for the LED ON/OFF Light to turn GREEN indicating that the Steamer Appliance is ready for use.

**Step 3** - Once the LED ON/OFF Light has turned GREEN, press the Power Switch to ON (I). Within a few seconds the Steamer Appliance should start emitting steam.



### Turning the Steamer Appliance OFF:

**Step 1** - To turn the Steamer Appliance OFF simply press the Power Switch to the OFF (O) position once. Almost immediately the steam will cease emitting from the Steamer Appliance.

### ⚠ IMPORTANT

- If the Power Switch is pressed ON before the LED ON/OFF Light has turned from RED to GREEN, water remaining from the previous use will be forced out because there has not been sufficient heating time to convert it to steam. This can or will cause small water "puddles" on the adjacent surface.
- Small water puddles may also occur if the Steamer Appliance was unplugged from the power outlet before being properly turned OFF with the Power Switch.
- Always make sure to use the Power Switch to turn the Steamer Appliance OFF after each use before unplugging the Power Supply Cord from the electrical outlet.

### Floor Mop Cleaning Tips

- Slowly pass over the surface to be cleaned with a steady controlled pace. The goal is to allow the absorbent Microfiber Cloth to pick up the dirt loosened by the steam.
- Apply steam as needed using the Steam Regulator Dial and the suggested settings contained in this manual. As a general rule less steam is better for most cleaning jobs because of the concentrated focus. This is especially true for surfaces that you want to leave clean and dry.
- When and if the Steamer Appliance stops producing steam when the Power Switch is ON, it typically means that the Water Tank needs to be refilled. In such instances, you still must turn the Power Switch to the OFF position, unplug the Steamer Appliance as described and follow the instructions for refilling the Water Tank contained in this manual.